

Wing Circular Walk

Length 4 miles

Wing has been used for settlement since the Iron Age. With one of the oldest Saxon churches in the country, a home for a Saxon Queen, connections with the Tudors and Stuarts as well as a Prime Minister, Lord Overstone and for the last 150 years, the Rothschild's. Home of the 26 Operation Training Unit during World War II. The village has a long and fascinating history, some of which can be seen on this walk.

The walk starts at the Parish Church (1) in Church Street. *This church is one of the most important and interesting Saxon churches in Britain and worth a visit. The 10th Century parts include the Nave, North Aisle, Chancel Arch and the Apse with Crypt underneath.*

Take the footpath through the churchyard and the field beyond. Once over the bridge through the hedge, turn right down the hedgeline. *It takes you over a stream that powered a water mill situated on the Aylesbury Road (2).*

Continue to the road and turn right. Follow the road with care to a T-junction and head for the gap in the hedge opposite being very careful when crossing the road. Follow the path around the edge of the field, go across the stream at the bridge and through the field and lane beyond to arrive at the end of High Street, Burcott. *This hamlet is well worth a quick detour to explore (3).*

Turn right onto the main road and go down the hill towards Wing for about 100 metres. Turn left on a footpath which leads to Long Spinney (4). *This has been leased by the Parish Council to restore it for public access and is of biological interest.*

Continue on the new Footpath through the meadow and spinney, leaving by the bridge over the stream at the far end. Head diagonally up the hill to join the other path and turn right, down the hill, across the stream and up the field beyond. At the top of the field turn left through the hedge and follow the hedge to the pylon by the old waterworks site (5).

Cut back across the field following the other footpath, heading for a stile roughly half-way along the bottom hedge. Cross this and the field beyond, keeping the farm buildings immediately ahead slightly to your left. Follow this footpath on through the hedges until you reach the kissing gate by houses at the edge of Wing (6).

Turn left to the main A418 road, then follow it right to the roundabout and cross left across the road with care onto a path down the side of the allotments. This takes you to fields of archaeological importance. *The site of the medieval House was here as evidenced by the substantial terraces of what would have been magnificent gardens (7).* Follow the path down the hill to the kissing gate right below the dam of the old pond (8). *This would have kept the house supplied with fish.*

Go through the kissing gate and diagonally up the hill heading for the large house on the skyline. Go through the kissing gate, cross the road and proceed along the backs of the houses for some 100 metres. Go right, down a path by the white-walled house to the busy main A418. Cross this with great care and follow Church Street back to the Church.

A Walk around Wing

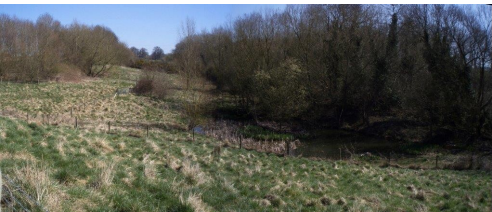




1. Wing church



3. Burcott High Street



4. Long Spinney—meadow and woodland



7. Ancient Garden Terraces at Lower Ascott

